



Oct-1 (phospho Ser385) Polyclonal Antibody

Catalog No	YP-Ab-15745
Isotype	IgG
Reactivity	Human;Mouse;Rat
Applications	IHC;IF;ELISA
Gene Name	POU2F1
Protein Name	POU domain class 2 transcription factor
Immunogen	The antiserum was produced against synthesized peptide derived from human POU2F1/OCT1 around the phosphorylation site of Ser385. AA range:361-410
Specificity	Phospho-Oct-1 (S385) Polyclonal Antibody detects endogenous levels of 41183 protein only when phosphorylated at S385.
Formulation	Liquid in PBS containing 50% glycerol, 0.5% BSA and 0.02% sodium azide.
Source	Polyclonal, Rabbit,IgG
Purification	The antibody was affinity-purified from rabbit antiserum by affinity-chromatography using epitope-specific immunogen.
Dilution	IHC: 1/100 - 1/300. ELISA: 1/20000.. IF 1:50-200
Concentration	1 mg/ml
Purity	≥90%
Storage Stability	-20°C/1 year
Synonyms	POU2F1; OCT1; OTF1; POU domain; class 2, transcription factor 1; NF-A1; Octamer-binding protein 1; Oct-1; Octamer-binding transcription factor 1; OTF-1; POU2F2; OCT2; OTF2; POU domain, class 2, transcription factor 2; Lymphoid-restricted im
Observed Band	
Cell Pathway	Nucleus.
Tissue Specificity	Ubiquitous. Isoform 2 is lymphocyte-specific.
Function	function:Transcription factor that binds to the octamer motif (5'-ATTTGCAT-3') and activates the promoters of the genes for some small nuclear RNAs (snRNA) and of genes such as those for histone H2B and immunoglobulins. Modulates transcription transactivation by NR3C1, AR and PGR.,PTM:Phosphorylated by PRKDC.,similarity:Belongs to the POU transcription factor family. Class-2 subfamily.,similarity:Contains 1 homeobox DNA-binding domain.,similarity:Contains 1 POU-specific domain.,subunit:Interacts with NR3C1, AR, PGR and HCFC1.,tissue specificity:Ubiquitous. Isoform 2 is lymphocyte-specific.,



Background

The OCT1 transcription factor was among the first identified members of the POU transcription factor family (summarized by Sturm et al., 1993 [PubMed 8314572]). Members of this family contain the POU domain, a 160-amino acid region necessary for DNA binding to the octameric sequence ATGCAAAT.[supplied by OMIM, Jul 2010],

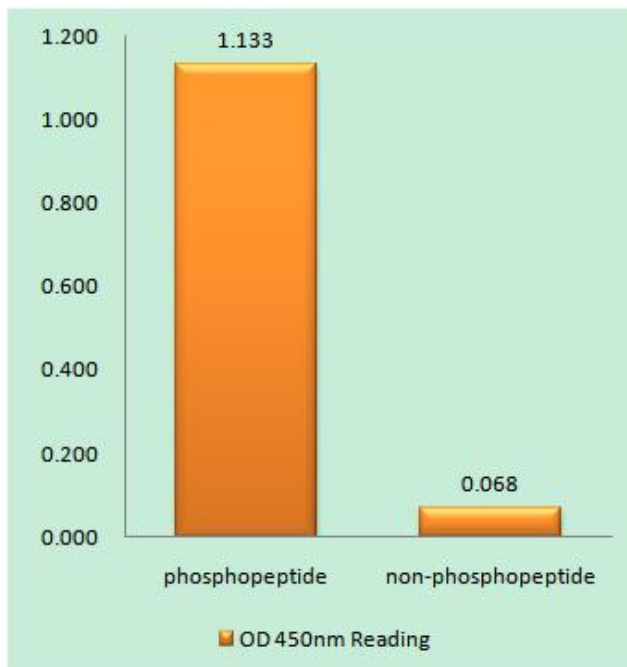
matters needing attention

Avoid repeated freezing and thawing!

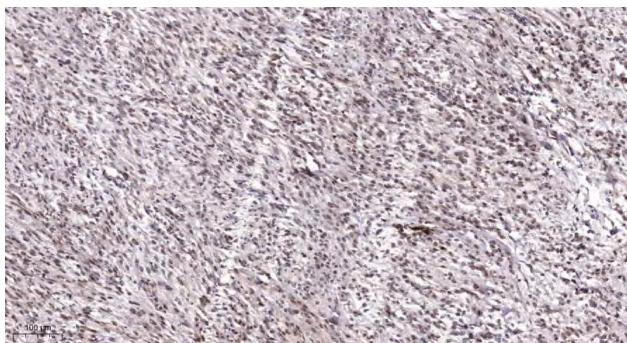
Usage suggestions

This product can be used in immunological reaction related experiments. For more information, please consult technical personnel.

Products Images



Enzyme-Linked Immunosorbent Assay (Phospho-ELISA) for Immunogen Phosphopeptide (Phospho-left) and Non-Phosphopeptide (Phospho-right), using POU2F1/OCT1 (Phospho-Ser385) Antibody



Immunohistochemical analysis of paraffin-embedded human Colon cancer. 1, Antibody was diluted at 1:200(4° overnight). 2, Tris-EDTA,pH9.0 was used for antigen retrieval. 3,Secondary antibody was diluted at 1:200(room temperature, 45min).